

## Mesa Arch

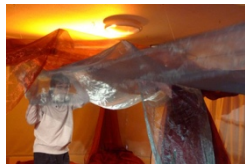
**Environment** Red/orange lighting. Giant red 'rock' Mesa arch, Neolithic rocks around space. Large and small gongs and beaters. Green voile river. Eagle costume. Red stones and gravel + shell/nut shakers. Large blackboard on wall + small blackboards + red/orange/white chalks. Water pots. Light and black sand box - projecting on wall.



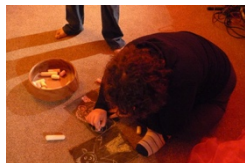
**Hot sun, red rock** Explore the space, under and around Mesa Arch, hide n seek, feel the heat and play golden gongs which resonate around the space, sounds overlapping, continuous, shimmering in the heat.



**Green River** Translucent green voiles pour out through the arch, rippling and bubbling, creating waves for going under and through - splashing with feet, rolling underneath, swimming along/between, sparkling in the sunlight. Greet the 'Eagle' as he comes down to the water, feel and hear his feathers as he approaches, touch his beak, dance together.



**Rock and Stone** The river recedes and the eagle flies away, leaving dry rock, gravel and stone. Play with the sounds - rhythmic tapping and scraping, supported by nut shakers. Add water and make patterns on the stones, see them change colour when wet. Develop with chalk and blackboards - petroglyphs. The light/sand box appears - create patterns in the black sand and see them appear on the rock wall ahead....like magic!



**Observations** The Mesa Arch remained standing all week! Created an interesting change in the use of space and more exploration and movement around the space by clients and carers alike. Voile rivers also increased movement activities and wheelchair users enjoyed this mobility, going under and around like the others. Eagle character was a great success, in spite of the quite fearsome mask. Filmstrip feathers gave sound and texture as well as being visually arresting. Rock rhythm section worked well, uniting the group and led nicely into water drawing on stones and pattern making with gravel, which was also enjoyed simply for its texture. Although the connection between sand box and projection was not realised by all, working over a light in this way, was highly motivating for many.



