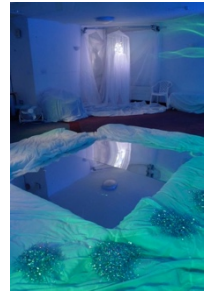


## Snow Dome

**Environment** Ice-mirror pool surrounded by quilts under white parachute in centre of the room, stretch wrap ice cones. Mobile mirrors, blue/white ice cubes, silver rah-rahs. Electric fans, sm. white fans, Chinese wind fans. Silver space blankets, vibratones. Ice Queen in mosquito net, with lights. Ice pops.



**Ice Mirrors** Step on the ice - feel it smooth and shiny, with hands and feet, see reflections, tap sounds, roll and slide over the surface. Play with reflections - looking at selves and others, bending mirrors to distort image, wobbling to make icy sounds. Add rah-rahs and see them shimmer and shake in the mirrors.

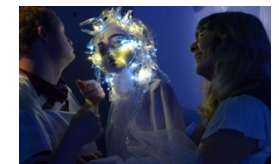
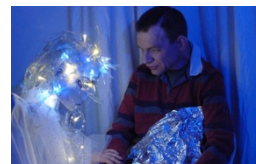


**Wind** Hear the sound of wind (sound effects) and feel the air move around you (electric fans). fan yourselves with little white fans, cold and blustery! Add wind fans and see the colours streaming in the wind, dancing and spinning around the space, over and around you, reflected in the mirrors, brrrr it's getting colder.



**Ice** The ice is freezing and cracking, silver space blankets spread over the space, hear the sound as it crackles towards you, over hands, feet, bodies. Dance with them, creating sounds as you move, hide under them, make rhythms with the sounds, cover ice cones with silver creating your own statues. They still and vibratones play creating a haunting soundscape.

**Ice Queen** appears, frozen in her own icicle. Your music melts the snow and she comes out to greet you one by one - interact with her in your own way. She has a surprise for you and gives out frozen ice pops for you to take away with you.



**Observations** For a first workshop at the new premises with different teams of artists, everyone coped extremely well, in fact, were so pleased to be back, they engaged with even more enthusiasm than usual. The familiarity of all the props used helped to reinforce the consistency of the work and all were comfortable and happy in an environment they knew and understood. The Ice Queen was a big hit as always.

