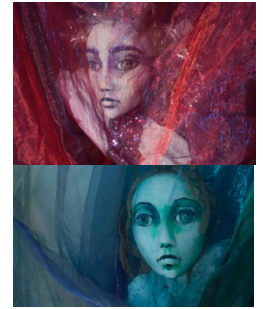
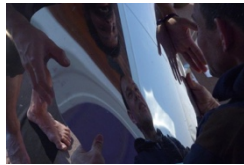


## Two Sisters

**Environment** Low End - mobile mirrors, 3 planed mirror boxes, giant mirror balls, silver bowls, coloured multi-faceted balls, purple/green/white face-paints and brushes. High end - giant mirrors on walls, purple/green 'mountains' concealing purple/green sister puppets, blue-green Chinese wind fans, green/white streamers, baskets of lavender, lavender oil/gel, Indian bells.



**Reflections** Play with multiple reflections, self, body parts, spinning balls, dropping bouncing, rolling over mirrors. Change reflection with face-paint on selves and mirrors.



**Two Sisters** appear, move together - mirroring and copying movements, greet everyone individually and together.

**Green sister** - energy and movement. Introduces fans and streamers, encouraging large movements and travelling. See colours dancing through the air, create patterns, feel the silk fluttering and swishing beside you. Cover selves/each other in colour, step on silk like a green pathway, see it ripple and roll around you. Twirl streamers into spinning shapes in space



**Purple sister** - calm and stillness. Brings baskets of sweet-smelling lavender to touch and smell. Relax on purple cloths and enjoy massage with lavender oil or soothing gel then taste purple/green grapes before the sisters bid farewell



**Observations** Reflections section enabled lots of entry points with variety of mirrored surfaces. Coloured balls were an instant draw for many people. Face paints enabled us to get close to clients with gentle touch. 2 halves of workshop created two different sections with contrasting dynamics - low end; personal engagement with variety of objects, high end; more focused watching and responding. Puppets - visually arresting - attention drawn to the magical focus and synchronised movement, everyone watching - small movements required focus. Very contained puppets - enabled ease of engagement. Green/Purple sections quite different - big movement and purple calm.

